



© Hexalock, Ltd • Shefayim Center • P.O Box 32 • SHEFAYIM 60990 ISRAEL  
• Phone: 972 9 9506777 • Fax: 972 9 9504040

---

# HexaLock<sup>®</sup>

## Plug-In for Rimage Duplicators

Version 4.5

Instruction Manual

March 2006

© 2006 HexaLock Ltd. All rights reserved.

**The information contained in this document, or in any of its annexes, is subject to change without advance notice. HexaLock assumes no responsibility for any damage or loss resulting from the use of this manual. No part of this manual may be reproduced, stored in a retrieval system, or transmitted in any form or by any means, electronic, mechanical, photocopying, recording or otherwise, for purpose other than the user's manual, without prior permission of HexaLock Ltd. The HexaLock name and**

**logo are trademarks of HexaLock Ltd. Other products and brand names may be trademarks or registered trademarks of their respective owners.**

## **1. Introduction**

Thank you for choosing HexaLock Copy Protection Solutions, an industry leading copy protection system that offers you the most advanced and unique copy protection features, including:

- ❖ Superior copy protection strength and performance.
- ❖ Ability to also protect recordable discs with the use of CD-RX - The first, truly copy protectable CD-R in the world, and the only commercially successful CD-R copy protection solution.
- ❖ Content Copy Protection – The first and the only copy protection technology that can protect content files such as PPT, PDF, HTML documents and multimedia files, in addition to program files.
- ❖ Virtual Digital Hologram technology – VDH is a powerful and virtually impossible to imitate identification and authentication element. [See Appendix B for a full description.]
- ❖ Simple and easy to use tools that help you complete all your copy protection tasks with just a few clicks of your mouse.

This document will guide you on installing and using HexaLock Plug-In for Rimage Duplicators. The plug-in enables Rimage Duplication Machines to burn copy protected discs using CD-RX media.

## **2. Installing HexaLock Plug-In for Rimage Duplicators**

### **1.A. Running Setup**

Before starting the installation process, please uninstall any previous version of the Plugin software that you have on your system.

You are now ready to run the setup program. If you are installing the plug-in from an installation CD, insert the CD to one of your local CD/DVD-ROM drives and wait for the setup program to start. If the setup program doesn't start automatically, browse the CD and click the setup program manually. Wait for the setup dialog to appear and follow the on screen instructions. At the end of the installation you will be requested to restart your system.

### **1.B.**

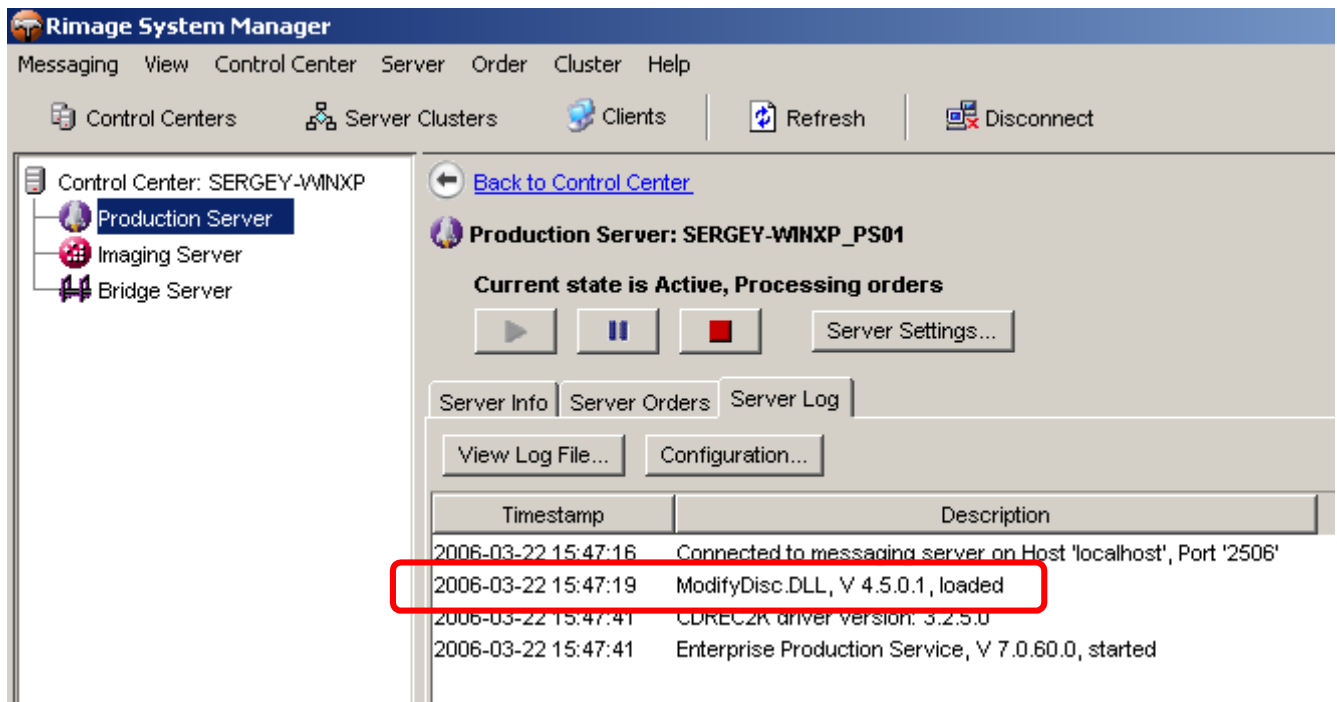
## Verifying Plug-In Installation

After installing the plug-in and restarting your system, a new tray icon with the HexaLock logo will appear on your system. This icon indicates that your copy of the plug-in is properly installed. You will also need to verify that it is loaded by Rimage's Production Server.



**Figure 1: Hexalock Plug-In Tray Icon**

Open the Rimage System Manager and view the Production Server's log. Look for the message 'ModifyDisc.DLL, V 4.5.0.0, loaded'. This message indicates your copy of the plug-in is active.



**Figure 2: Production Server's Log File**

### 1.C.

## **Activating the Software**

On the first use of the plug-in, just before the first protected disc is about to be recorded, you will be required to activate your copy of the plug-in. You are entitled to 3 licenses with each copy of the software that you have purchased. Each license allows you to install the HexaLock plug-in on one Rimage system.



**Figure 3: The Activation Dialog**

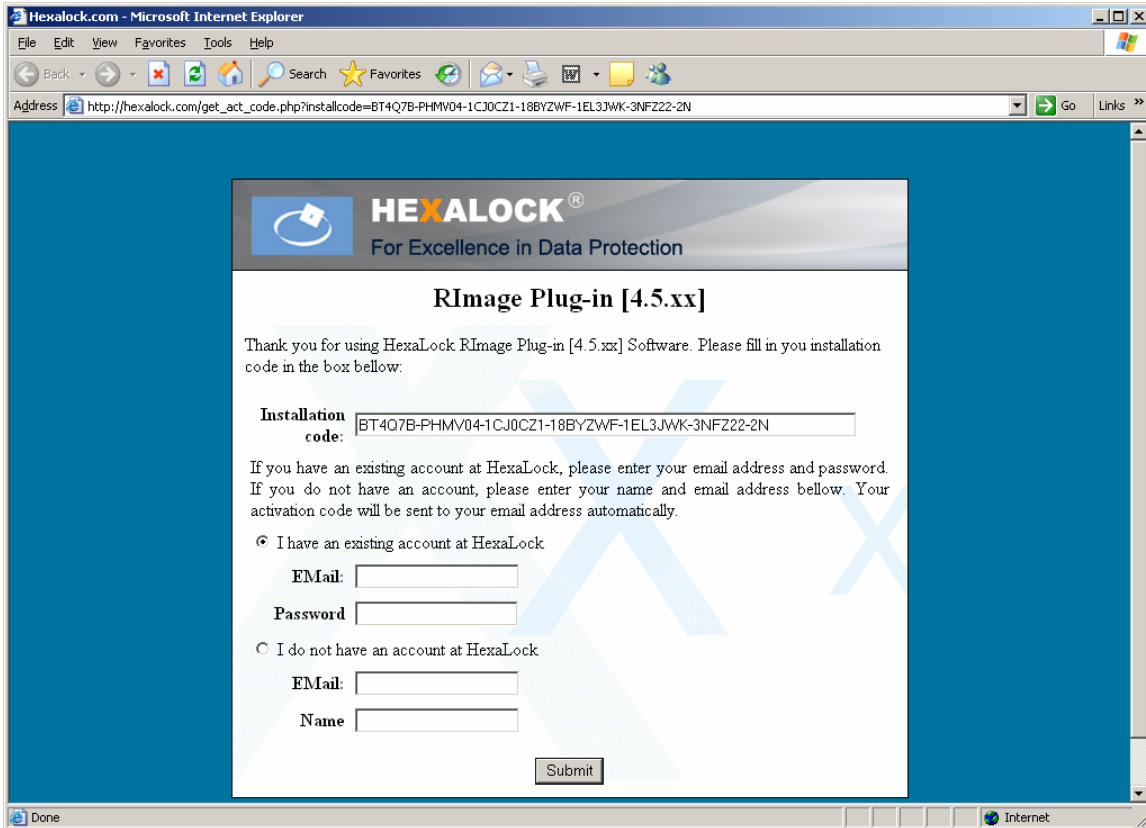
Users that have purchased their software via the Internet have received a “Package Key” code. If you have installed the system from an installation CD, the activation process will automatically pick the Package Key that is embedded within the CD and skip to the next page. If your installation CD is not in the drive, you may insert it and click the ‘Use installation CD’ button. Internet installations also include this button. It can be used to install a copy of the software that was obtained via the Internet, using a license of an installation CD you may have.



**Figure 4: Obtaining an Activation Code**

After validating the Package Key, the activation process generates an “Installation Code”. This code represents an application to install the specific software copy on your specific computer. Clicking the “Get code” button will automatically send the Installation Code to HexaLock licensing Server and will redirect you to the HexaLock Plug-In Activation web page for obtaining your Activation Code.

At the activation web page, fill in your email address and password and click submit. The Activation Code will be sent to you by email instantly. If you do not have an existing account at HexaLock, just fill in your email address and name. The Activation Code will still be sent to you instantly. In this case, a new account will be created for you automatically. Filling in your additional contact information is optional.



**Figure 5: CD-RX Duplication System Activation Web Page**

## **1.D. Running the System in Demo Mode**

Users that wish to evaluate the HexaLock Plug-In for Rimage Duplicators prior to purchasing it, can download the software via the HexaLock website. When requested to activate the software, click the “Run in DEMO mode” button. While in Demo Mode, it is possible to record only 3 discs. After recording the 3<sup>rd</sup> disc the software will automatically delete the source image and abort the job. To continue evaluating the system, just restart your machine and create a new job.

### **3. Duplicating Copy Protected Discs Using Rimage Machines**

The process of duplicating copy protected discs using CD-RX media involves two main stages: a) Create a Flagged Gold Master Image; and b) Submit a new job using QuickDisc or the Workstation.

Use instruction A in order to create a Flagged Gold Master Image. Then continue to instruction B if you use Production Server version 5.8.x. If you are using Production Server version 6.2.30 or above, skip instruction B and perform instruction C instead. The HexaLock Rimage Plugin, v. 4.5 has been tested for use with Rimage Software Suite, v. 7.0 and above. Earlier HexaLock Rimage Plugin versions should not be used with Rimage Software Suite v. 7.0 and above.

#### **A. Create a Flagged Gold Master Image**

A Flagged Gold Master Image is an ISO-9660 image file in which the files that have to be protected are flagged. You must use this Image as your source file for creating a protected CD-RX disc. The HexaLock software plug-in that is installed on the Rimage duplicator automatically detects each flagged file and protects it before recording the image to a CD-RX disc.

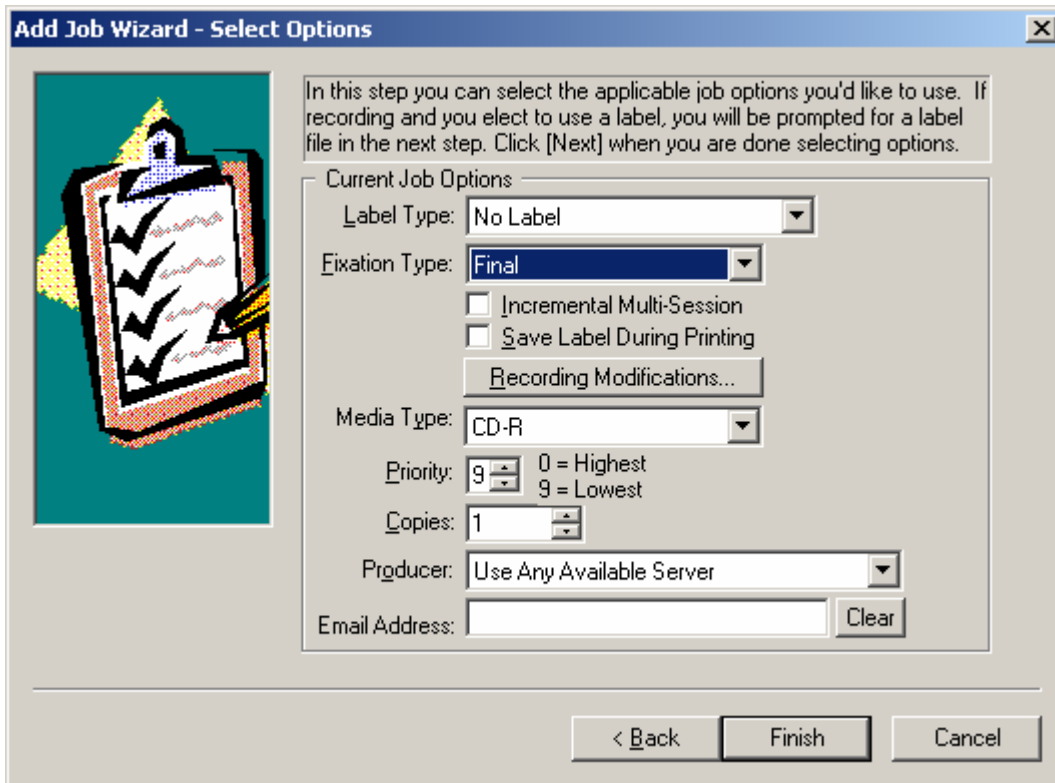
Use the HexaLock AutoLock Wizard to create a Flagged Gold Master Image. The AutoLock Wizard is available for free download from the HexaLock website. Please refer to the AutoLock Wizard manual for detailed instructions on creating a Flagged Gold Master Image. Note: All the files that are to be on the final duplicated CD-RX discs must be included in the created ISO-9660 Image, not just the files to be protected.

#### **B. Burning copy protected discs using CD-RX media and Rimage Producer Suite v5.8.x**

Users of Rimage Producer Suite v5.8.x can add new jobs for duplicating copy protected discs from a Flagged Gold Master Image and CD-RX media by using the CD-R Workstation. To add a new job for duplicating copy protected discs follow these steps:

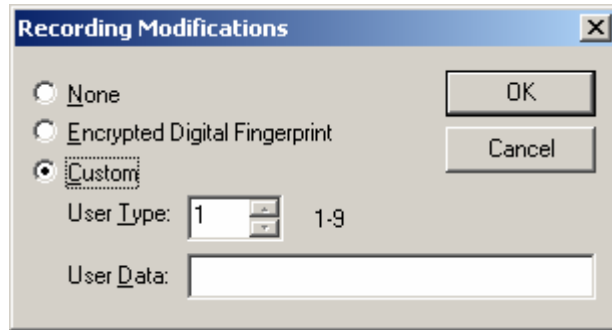
1. Open the Rimage CD-R Workstation.
2. Open the 'Add new job wizard' using the menu item Options | Add new job wizard.
3. Select the option 'Record an Existing Image (No Image Creation)' and click 'Next'.
4. Edit the Job ID and Job Description if required and click 'Next'.
5. Click the 'Browse' button to select the Flagged Gold Master Image that you created in step 3. A. Change the 'Files of type' field to 'All

- files (\*.\*)', select the Flagged Gold master Image and then click 'Open'.
6. Click the 'Load PVD Information from Existing ISO Image' button. A confirmation request will be displayed. Click 'Yes' to proceed.
  7. Click the 'Next' button.
  8. The 'Select Options' dialog will appear.
  9. Set 'Fixation Type' to 'Final'.
  10. Clear the 'Incremental Multi-Session' check box.
  11. Set the 'Media Type' to CD-R.
  12. Place HexaLock CD-RX discs into the input tray.
  13. Set the required priority level and number of copies to duplicate.  
NOTE: It is recommended that a first copy be made and tested for functionality before proceeding to multiple copies. Also attempt to make a copy of this disc in order to confirm that HexaLock copy protection is working. If a copy is successfully made, run the program to confirm that the protection is in place.



**Figure 6: The Select Options Dialog**

14. Click the 'Recording Modifications' button.



**Figure 7: The Recording Modifications Dialog**

15. Select the 'Custom' option and click 'OK'.
16. Click 'Finish'.

**C. Burning copy protected discs using CD-RX media and Rimage Producer Suite v6.2.30 or above**

Users of Rimage Producer Suite v6.2.30 can add new jobs for duplicating copy protected discs from a Flagged Gold Master Image and CD-RX media by using the QuickDisc. To add a new job for duplicating copy protected discs follow these steps:

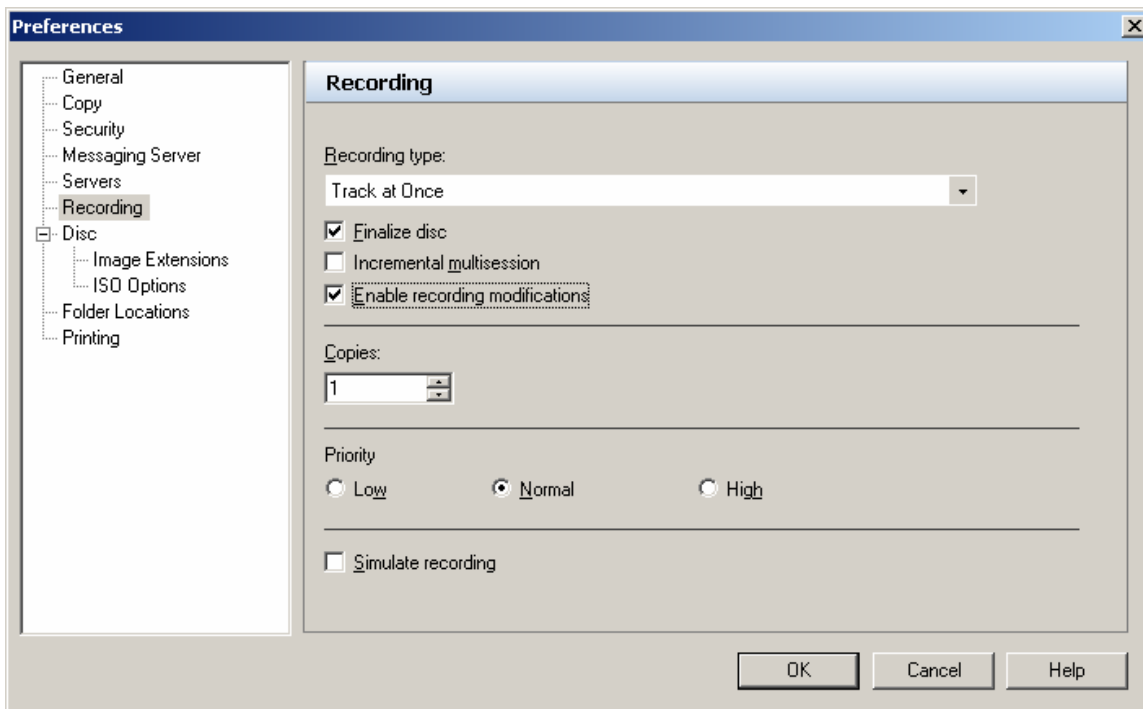
1. Open QuickDisc.
2. On the Quick Start dialog select 'Image File to Disc' project. If QuickDisc is already started, you can open the Quick Start dialog via the 'File' menu.



**Figure 8: The Quick Start Dialog**

3. Drag the Flagged Gold Master Image file that you created in step 3. A. into the 'Image File' window.
4. Click the 'Settings' link from the 'Project Summary' window.
5. Wait for the Project Settings dialog to appear and then select 'Record Settings'.

6. On the 'Recording Type' group, select 'Track at Once recording and check the 'Enable Recording Modifications' check box.
7. Click OK and customize the rest of the job settings such as the disc label, disc title and number of copies to duplicate.
8. Place HexaLock CD-RX discs into the input tray.
9. Your project setup is now complete, click the 'Submit' button to submit the job to the production server and start the duplication process.



**Figure 9: The Project Settings Dialog**

## **D. Enabling the Use of CD-RX Media**

CD-RX discs contain a first session containing HexaLock proprietary information that makes the discs copy protectable. To enable the use of CD-RX discs, go to the recording settings dialog of your Production Server and make sure that the 'Use new media only' setting is clear.

